

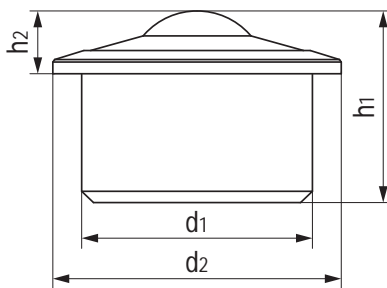
BTU 万向滚珠轴承 Ball transfer units



塑料万向滚珠轴承与钢制轴承相比具有不导电、耐酸碱液、无需润滑、免维护、低摩擦、重量轻（最多可减少70%）、适用于真空或压力、盐水-证明，根据材料选择不含金属成分，运输玻璃等易碎物品，可用于爆炸性环境和无菌区域（例如医疗技术），可定制设计。

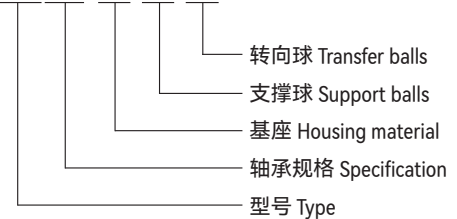
In comparison to steel units, ball transfer units out of plastics are non-conductive, resistant to acid and lye, no lubrication, maintenance-free low friction, low weight (up to 70% less), appropriate for vacuum or pressure, saltwater-proof, free of metallic components depending on selection of materials, transport of fragile goods such as glass, available use in explosive atmosphere and aseptic areas (e.g. medical technology), customized design possible.

标准规格 Standard specifications



产品编码 Part No.:

BTU508-PM-ES-PM



产品编码 Part No.	d ₁ [mm]	d ₁ 公差 Tolerance [mm]	d ₂ ±0.10 [mm]	h ₁ [mm]	h ₂ ±0.20 [mm]	*最大轴承静态载荷 Max. axial static load [N]
BTU508-PM-ES-PM	15	±0.04	20	11.1	4.3	45
BTU512-PM-ES-PM	18	±0.04	23	15.5	7.3	55
BTU515-PM-ES-PM	24	±0.06	31	21	9.8	70
BTU519-PM-ES-PM	30	±0.06	37	26	9.8	85
BTU522-PM-ES-PM	36	±0.08	45	30	9.8	100
BTU525-PM-ES-PM	38	±0.08	45	31	13.8	120
BTU530-PM-ES-PM	45	±0.08	55	37	13.8	150
BTU538-PM-ES-PM	55	±0.08	65	48	16	175
BTU545-PM-ES-PM	62	±0.10	75	53.5	19	200
BTU560-PM-ES-PM	100	±0.10	117	78	30	300

*轴承载荷特性取决于材料配置 Max. static load depending on selection of materials

BTU万向滚珠轴承可选配置表 Ball transfer unit optional materials

基座 Housing			转向球 Transfer balls			支撑球 Support balls		
PM	POM	标准材料 Standard materials -40/+90°C	PM	POM	标准材料 Standard materials -40/+90°C	PM	POM	无磁性与重量轻 Non-magnetic and lightweight -40/+90°C
PK	PEEK	高强度与耐腐蚀 High-load&Anti-corrosion -100/+250°C	ES	Stainless steel	高载荷 High-load	ES	Stainless steel	标准材料 Standard materials
PT	PET	医疗辐射 Medical radiation -40/+100°C	ZO	Ceramic	高强度与耐腐蚀 High-load&Anti-corrosion -200/+400°C	ZO	Ceramic	高强度与耐腐蚀 High-load&Anti-corrosion -200/+400°C
PS	PPS	高强度与耐腐蚀 High-load&Anti-corrosion -40/+200°C	PK	PEEK	高强度与耐腐蚀 High-load&Anti-corrosion -100/+250°C	PK	PEEK	高强度与耐腐蚀 High-load&Anti-corrosion -100/+250°C
PF	PVDF	真空应用 Vacuum applications -50/+150°C	GL	Glass	重量轻与低成本 Lightweight and low cost -200/+400°C	GL	Glass	重量轻与低成本 Lightweight and low cost -200/+400°C